

ERA WATER

Examples of pump stations around Metropolitan Adelaide

Tea Tree Gully Football Club

Steventon Drive, Banksia Park

* Note that Tea Tree Gully Football Club examples are most similar to Shakespeare Ave Pump Station

1. Tanks buried into embankment. Pump station above ground
2. Tank fully buried but lid not covered
3. Tank partially buried. Pump station above ground

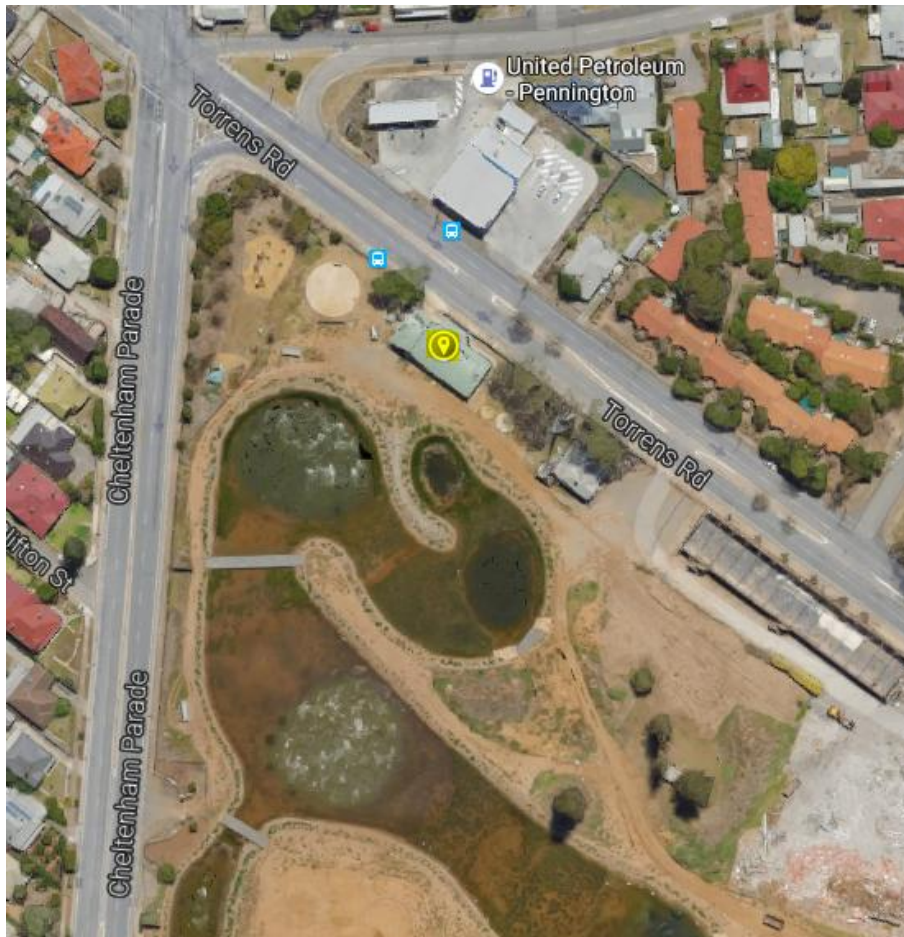


ERA WATER

Charles Sturt Major Pump Station

Corner Torrens Road and Cheltenham Parade, Pennington

Buried tank
Large Pump Station



ERA WATER

SA Water Barker Inlet Pump Station

South Terrace, off Cormack Road, Wingfield



ERA WATER

City of Salisbury Major Pump Station

Bushman Court, off Diagonal Road, Pooraka

Tanks and pump station above ground



ERA WATER

Unity Park Pump Station

South Terrace, Pooraka

Small pump station



ERA WATER

City of Salisbury Major Transfer Pump Station

Nelson Road, Para Vista

Pump station above ground – listen to pumps

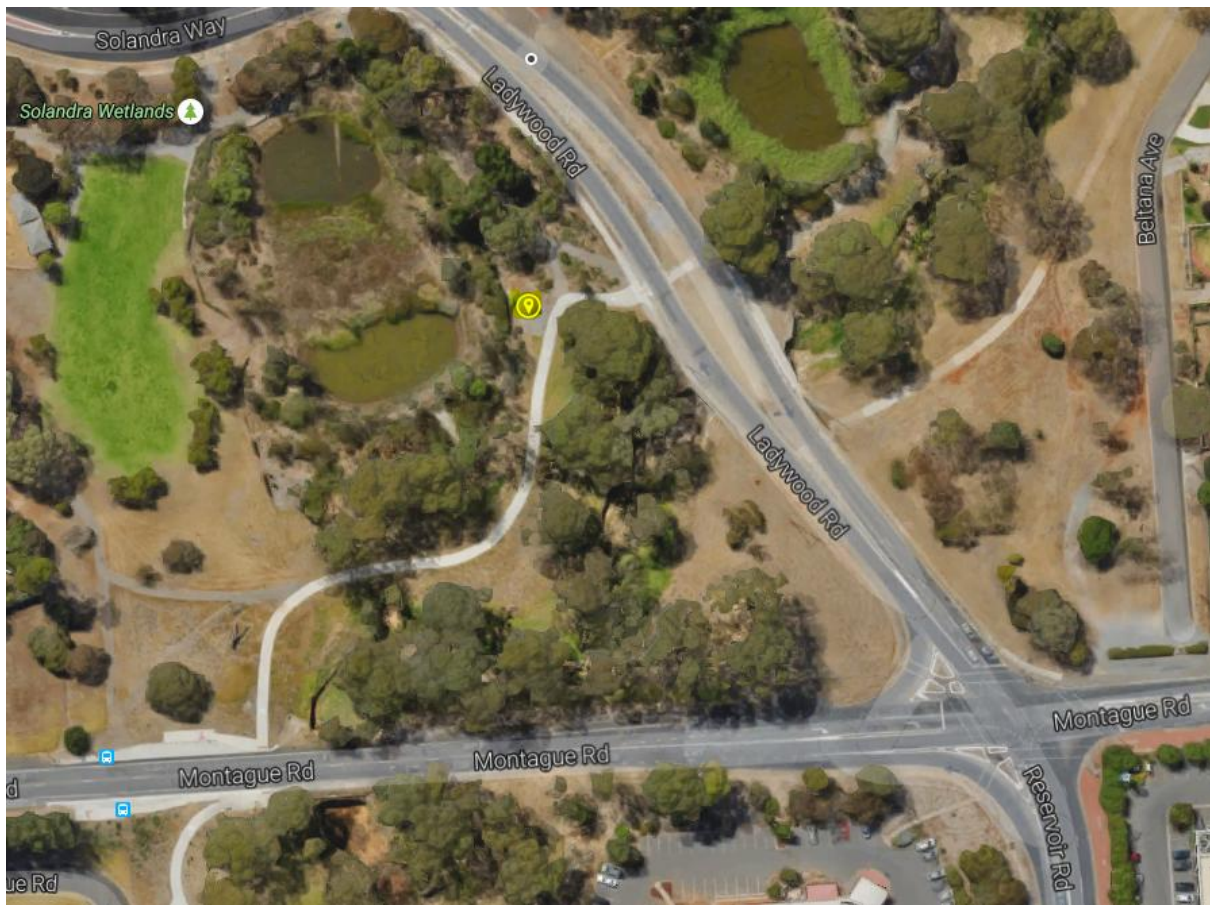


ERA WATER

Pump Station at Solandra Wetlands

Ladywood Road, Modbury North

Pump station – less insulated than what Shakespeare Ave will be



ERA WATER

Golden Grove Settlement Pump Station

Captain Robertson Ave, Golden Grove

Buried tank

Pump station built into embankment



ERA WATER

Golden Grove Football Club

One Tree Hill Road, Golden Grove

Tanks and pump station above ground
Listen to noise of pumps



ERA WATER

West Lakes Golf Club

Frederick Road, Royal Park

Tank and pump station above ground

