



# Annual Report 2012



# Contents

Chairperson's Report	1
ERA Overview	2
ERA's Structure	3
ERA Project Highlights	4
FIG	7
FIG Projects	8
ERA Financial Statement	13

## ERA'S VISION

Adelaide's Eastern Metropolitan Councils working together to better serve their communities

# Chairperson's Report



Cooperation between Adelaide's eastern region councils is long standing, with the formation of ERA in 2008 being the culmination of this tradition.

Although the seven councils of the Eastern Region Alliance constitute nearly 24% of the total population of metropolitan Adelaide, the majority of ERA councils are small or mid-sized entities. Through their collaboration, these ERA councils are able to pursue projects and jointly employ staff that would otherwise be beyond their resources.

While the ERA Mayors and CEOs are focused on the strategic pursuit of projects likely to result in partnerships with Federal funding bodies, the staff who make up the fourteen Portfolio Groups have set in train a wealth of joint projects with outstanding benefits for our ratepayers.

It is rewarding to note that ERA is achieving recognition for its collaborative efforts and I look forward to celebrating even more ERA successes in the coming years.

**David O'Loughlin**

**Chair, ERA FIG**

# ERA Overview



The Eastern Region Alliance (ERA) councils have agreed to improve cooperation, collaboration, and coordination across the member councils.

The Eastern Region Alliance (ERA), consisting of the Cities of Burnside, Campbelltown, Norwood, Payneham & St Peters, Prospect, Tea Tree Gully, Unley and the Town of Walkerville, was formed in late 2008 when a Memorandum of Understanding was signed by the seven councils.

The councils have agreed to collaborate to work towards improved co-operation, more effective working relationships and joint actions to agree and address strategic priorities between any two or more of the seven councils.

With the goal of securing a sustainable lifestyle, excellent services and facilities for its constituent communities, ERA aims to:

- Improve cooperation, collaboration, and coordination across the member councils.
- Establish a robust operational framework to deliver effective and efficient services
- Be successful in attracting state and federal government funding for regional initiatives.
- Increase awareness, and the influence, of ERA within the three spheres of government

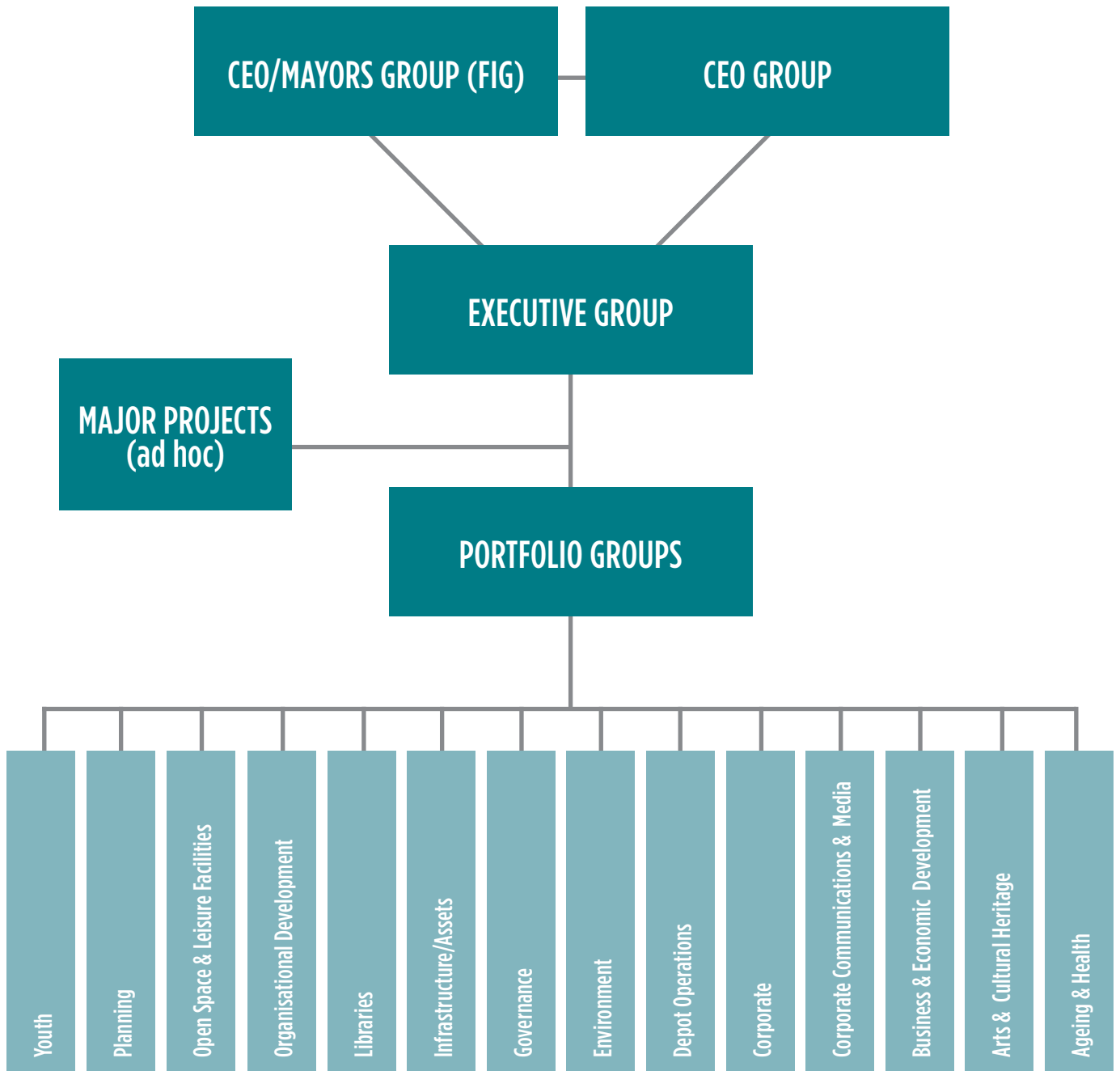
The CEOs of the seven councils meet monthly to discuss issues of mutual interest, while the Mayors and CEOs meet quarterly. A range of joint projects is carried out by fourteen working parties or Portfolio Groups made up of staff from the ERA councils:

- Ageing & Health
- Arts & Culture
- Business & Economic Development
- Corporate Communications and Media
- Corporate Services
- Depot/Operations
- Environment
- Governance
- Infrastructure/Assets
- Libraries
- Open Space & Leisure Facilities
- Organisational Development
- Planning Policy
- Youth

The Chairpersons of these Portfolio Groups meet regularly with the ERA CEOs to report on progress and once per year the members of all Portfolio Groups, CEOs and Mayors meet to share and celebrate successes.

Since ERA was formed, it has achieved significant benefits for the ratepayers of the seven communities and has numerous projects in train that will come to fruition in the near future.

# ERA's Structure



# ERA Project Highlights

## 1. The Ageing Group

The Ageing Group has developed a regional Ageing Strategy for ERA councils and is currently progressing initiatives identified in that strategy, such as options for Community Transport and joint promotional materials. Funding has been received for a Community Passenger Network Project Officer position to progress cross-council transport initiatives.

## 2. The Arts and Culture Group

The Arts and Culture Group has run skills development sessions for artists and is planning 'train the trainer' programs for ERA based artists. They have curated a collaborative exhibition, 'The ERA we live in', and after jointly promoting SALA this year, are planning joint ERA initiatives for SALA 2013. The group has developed a joint brochure, detailing the wide range of galleries, events and activities available for artists and the general public in the eastern region. Available through all ERA galleries, libraries, arts and community centres and council offices, the brochure includes details of the various cultural programs, venue locations and key contacts.

## 3. The Assets and Infrastructure Group

The Assets and Infrastructure Group has focused on two key projects, the Useful Lives and Unit Rate Project which has enabled comparisons across councils to highlight variations in treatment and costs, and the reasons for these. The group is also investigating options for joint purchasing ventures through the Procurement Opportunities Project.

## 4. The Environment Group

The Environment Group developed a puppet show for primary students to educate them about waste services and successfully organised a bulk purchase scheme of solar installations for ERA ratepayers. The group, which has shared common days each fortnight where they work together, has developed a group action plan focusing on four major areas, one of which is e-waste. They have secured a grant from Zero Waste to conduct research into a joint hard waste collection scheme across ERA.

## 5. The Libraries Group

The Libraries Group ran training sessions on financial skills for the newly retired; developed common promotional materials for ERA libraries; conducted research into the use of RFID technologies across ERA libraries; and is investigating forming a Local Purchase Consortium to gain benefits of bulk purchasing. By 2014 most ERA libraries will join the One Card Library Consortium which will allow borrowers access to resources from libraries across the state.



# ERA Project Highlights

## 6. The Open Space and Leisure Facilities Group

The Open Space and Leisure Facilities Group is developing a regional recreation plan, using data already in existence in councils to build on for the plan. Open source software is being used to allow for an exchange of information as part of the mapping project.



## 7. The Planning Policy Group

The Planning Policy Group, in close liaison with the Open Space and Leisure Facilities Group, is developing an ERA Regional Spatial Master Plan which will present a future vision for ERA. In so doing they are investigating activity centres, open space, movement across councils and employment across councils. The group supported a Forum on ESD for planners, and ran a World Town Planning Day event.

## 8. The Corporate Services Group

Through the development of a business case, the Corporate Services Group is investigating options for shared IT services across ERA as well as exploring options for sharing internal audit resources and increasing ERA grant applications.

## 9. The Economic Development Group

The Economic Development Group has been focused on how to deal with the possible loss of Federal Government funding for BECs, now secured for a further 12 months. A transitional model which will see the current BEC model replaced within twelve months has been endorsed by the CEOs. The group is working to support the rollout of the NBN across ERA councils.

## 10. The Governance Group

The Governance Group has run joint training sessions for Elected Members; has won an R&D grant to develop a Standard Minute Keeper's Handbook for use across all of SA Local Government; and is developing a shared Corporate Governance Framework for use by all ERA Councils.

# ERA Project Highlights



11

## 11. The Youth Group

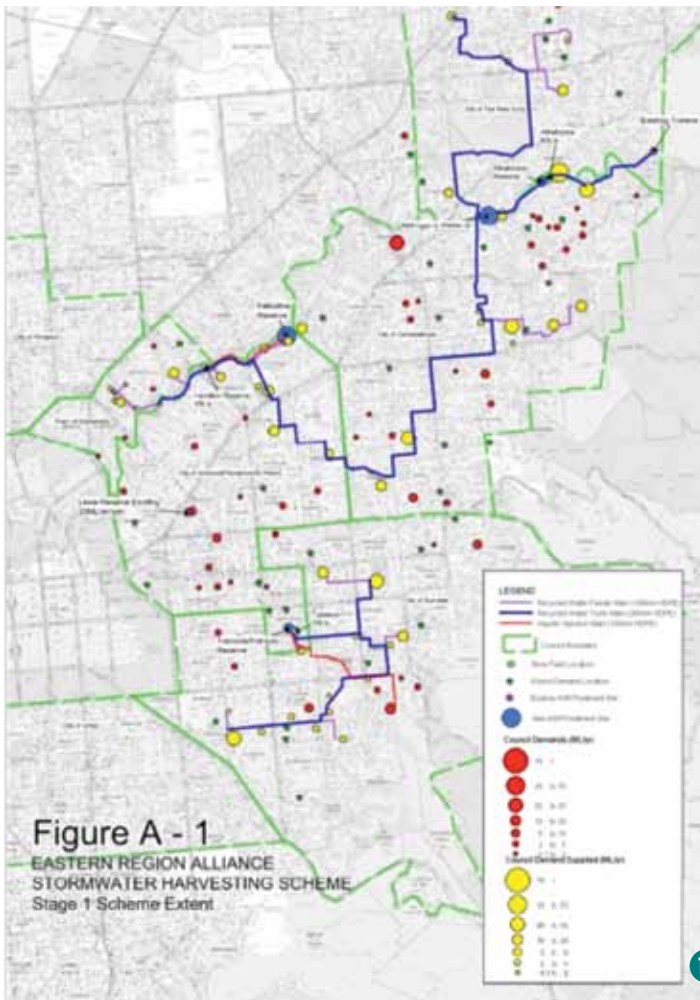
For the past three years the Youth Group has run “Get the Drift!”, an award winning day of workshops for young people aged 13 – 16 years focused on staying positive, keeping active and coping with life’s challenges. The group has also developed and disseminated a pocket card, ‘When it hits the fan’, to assist ERA youth to access the services they need. This will be replaced by a website in 2013, making it accessible to youth across the whole state.

## 12. The ERA Stormwater Harvesting and Reuse Major Project Group

Over the past three years the ERA Stormwater Harvesting and Reuse Major Project Goup has overseen significant preliminary work on a stormwater project mainly through a feasibility study, partially funded by the Commonwealth under the National Urban Water and Desalination Plan: Stormwater Harvesting and Reuse Grants. This study included: hydro-geological investigations; an assessment of water supply and demand; the technical feasibility of the scheme; the financial viability of the scheme; preliminary design work, including water distribution; risk management planning; and initial considerations for implementation, management and planning.

ERA has secured \$9.5m in Commonwealth grant funds and in-principle support for up to \$2m funding from the Natural Resource Management board to add to the \$16.5m committed by the Project Councils. This is a significant project for the ERA and also for South Australia. The smooth and effective delivery of a sustainable stormwater harvesting and reuse project for the ERA can provide a model for other groups of councils to undertake similar projects.

Since ERA was formed, it has achieved significant benefits for the ratepayers of the seven communities and has numerous projects in train that will come to fruition in the near future.



12



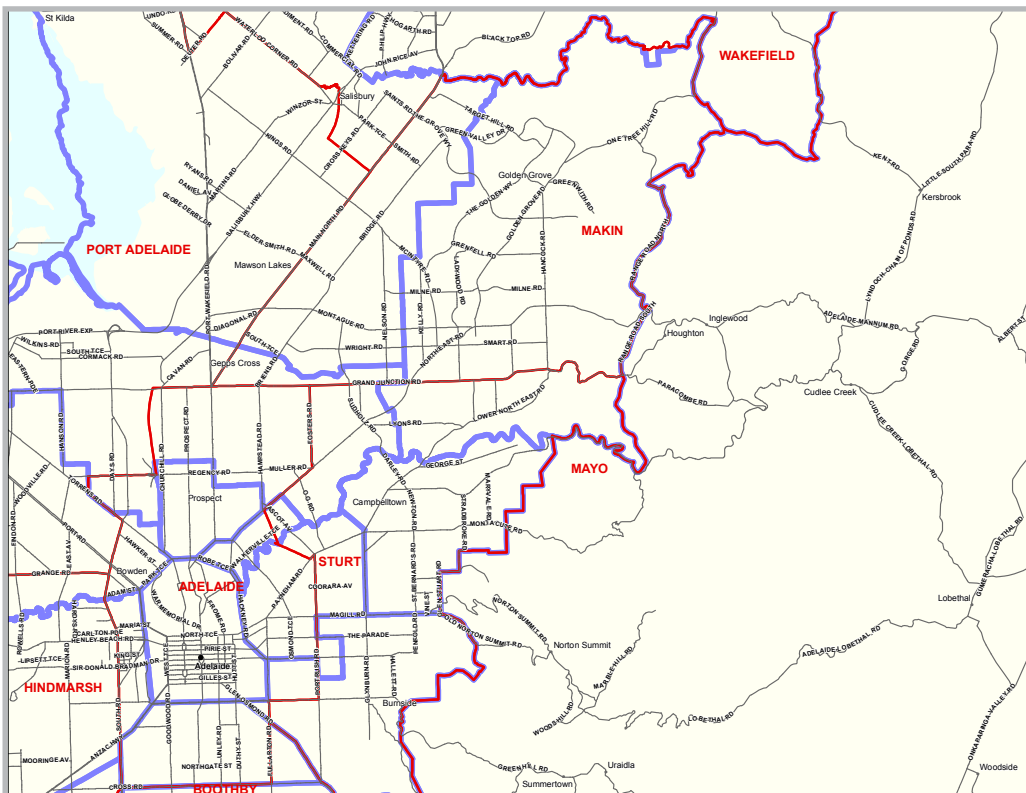
# ERA's Federal Initiatives Group (FIG)

## The Role of ERA-FIG

In a strategic initiative, the Eastern Region Alliance formed the Federal Initiatives Group (FIG) in 2011 with the purpose of:

- Maximising the benefits for infrastructure and special projects funding that can accrue to the communities that are associated with the Federal seats of Adelaide, Sturt and Makin.
- Encouraging a close working relationship between Federal Members and the councils that make up the Group. (Note that prior to all Federal General Elections Candidates from the two major parties will be invited to discuss their party policies at a special meeting of the FIG).
- Focusing the activities of the FIG at the strategic level where it is beneficial to do so.

In undertaking its role and purpose the Group is cognisant of other regional organisations that are associated with Federal Electorates including those of Adelaide, Sturt and Makin. The Group will work in harmony with these bodies to avoid duplication and will take the opportunity, where appropriate, to influence them and use their devices to leverage opportunities.



## Eastern Region Alliance - Federal Electorate Boundaries

- Federal Electorate Boundaries
- Local government boundary

# The FIG Projects

## Much of the work of FIG during 2012 has been focussed on the development of a program of action projects.

To stand out from competing regions on the National stage a clear view of the ERA identity and a strong and unified commitment to what we want is a pre-requisite. ERA-FIG's tactical goal is to develop the relationship with the Federal Government so that the Eastern Region of Adelaide can benefit from a greater focus from Commonwealth Parliamentarians and Government. For this to be successful we need to define the advantages of our regional entity and the action projects that will provide the collaboration, support and funding for its long term benefit.

Over three meetings of the ERA-FIG, comprising the Mayors and Executive Officers of the seven councils, a comprehensive program of projects was developed.

The development of projects was managed by the FIG Strategic Advisor and considerable input was made by the ERA Portfolio Groups of Ageing, Business & Economic Development and Environment. Consultants were commissioned to undertake specialist strategic guidance on the project development.

### There are two levels of projects:

Firstly those projects of importance in the Eastern Region which concern areas of activity already defined by the Commonwealth Government and for which, in most cases, programs and funding regimes were in place. These form an on-going pursuit for support and funding by the ERA councils either individually or regionally (**Figure 1**).

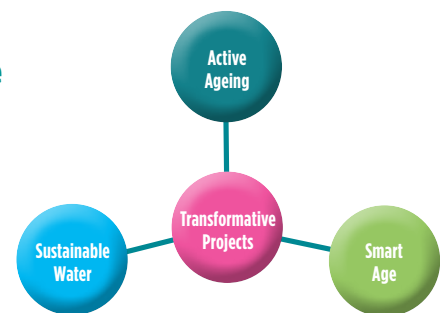
During 2012 ERA – FIG emphasis was given to a potential application under the Biodiversity Fund, analysis of the impact of funding changes under the HACC transition and the definition of a submission under the Climate Change Adaptation program.

Secondly those projects that are considered by the ERA-FIG Mayor's and CEO's to be of significant value in the region but require a concerted expression on the part of the Eastern Region to influence the Commonwealth. These projects are referred to as Transformative and three key project areas have been emphasised by ERA-FIG (**Figure 2**).

**Figure 1: ERA Opportunistic Projects 2012**



**Figure 2: ERA Transformative Projects 2012**



# The FIG Projects

**Within Active Ageing four transformative project opportunities are suggested.**

## 1. Aged Care Workforce Training

Potential Commonwealth interest is through the aged care agenda, training and workforce development.

- It is known that there are high rates of attrition in the aged care sector workforce.
- This project is aimed at developing strategies to train/recruit and retain staff for the aged sector.
- It can target the attraction of training opportunities into the region through TAFE and the Certificate 4 aged care training package.
- Opportunity to locate training at a particular location (eg Modbury).
- Opportunity to shape the aged care worker of the future and create new experiences and facilitate relationships commensurate with the new elderly.
- The model can ensure that older people have a role in this training as mentors, advisors and trainers.

## 2. New Volunteering

Potential Commonwealth interest is through the importance of the voluntary sector and the role played in it by the elderly both for assistance to organisations and to provide relationship building and care.

- The “boomer” generation is known to be committed to the concept of volunteering; but there has to be more on offer than driving buses and stacking books.
- ERA is well placed to develop a regional approach by building on the strengths of its potential volunteer population base.
- ERA has a high level of skill and experience across a diverse range of professional backgrounds and this is backed up with great IT skills and high levels of on-line access. This project concept has a close relationship to the aims of the Smart Age (see next page).

To stand out from competing regions on the National stage a clear view of the ERA identity and a strong and unified commitment to what we want is a pre-requisite. ERA-FIG’s tactical goal is to develop the relationship with the Federal Government so that the Eastern Region Alliance can benefit.

# The FIG Projects

Potential Commonwealth interest is through the creation of a better connected, stimulated and active elderly population capable of participating more fully with the community.

## 3. The Learner's Market

Potential Commonwealth interest is through the creation of a better connected, stimulated and active elderly population capable of participating more fully within the community.

- Access to ongoing opportunities for learning is a big priority for older people in ERA communities. Learning for many is about personal interest and stimulation.
- In ERA elderly communities a large part of the informal learning comes from the University of the Third Age and Community Centres. However limitation of resources requires a new business model.
- New possibilities open up when a project can be developed that harnesses the potential of self-organised distributed networks of learners and teachers who can come together in homes, cafes, libraries and community centres to exchange and share skills, knowledge and interests.
- Members would be free to barter, sell or volunteer their skills and time in a learning market.

## 4. Caring for Carers – “Weavers”

Potential Commonwealth interest is through an innovative program that will develop networked caring within the community and take pressure off other, often expensive, support services.

- The Weavers program has been developed by TACSI. It is “shovel ready” and requires funding support to achieve impact in the community.
- It takes a network to care. Weavers is a new kind of support for people in caring situations from local people with caring experience.
- Weavers help people to activate friends & family, navigate services, learn condition-specific strategies and balance caring with Great Living. Having a baby? Turn to a midwife. Caring for an older parent? Turn to a Weaver.

**Within Smart Age three transformative project opportunities are suggested.**

## 1. Putting Creative ERA Industries to work

**Potential Commonwealth interest is through regional economic development and stimulation of a creative sector that can have an impact at the national level.**

- From discussion with the Business and Economic Development Portfolio Group the value of building and construction within the region over the next ten years has been calculated as being in excess of \$500 Million. This includes such projects as libraries, sporting precincts, shopping centres/TODs and education facilities.

# The FIG Projects



- Development of this nature offers business and investment opportunities for ERA's creative industry solutions involving interior design, architecture, ICT, property development/project management and advertising/promotion.
- The concentration of the creative class in ERA opens up significant investment and business development opportunities for micro self-employed businesses to establish small and medium companies that operate locally and globally.
- Opportunities exist already in clusters such as Kent Town, Glenside Media and Arts Precinct and the Magill Campus.
- In addition creative business opportunities exist for:
  - Smart City Spaces - demonstration projects that showcase the capacities and capabilities of ERA's digital and new media companies.
  - "Beyond" Libraries - where existing library hard and IT infrastructure is harnessed to support virtual universities, provide contact points for business advice and promotion and connect education and training.
  - Classrooms of the Future – incorporating new media and social media to transform learning and in doing so, integrating with the other components of the creative sector and school to work transition in the eastern region of Adelaide.
  - Interest is being shown already in the economic advantages of nurturing the creative sector. (A good idea becomes everybody's idea eg ["Mr Horton said Norwood, Payneham and St Peters Council could offer incentives for developers and businesses to invest in Kent Town as a creative hub"](#). [Eastern Courier Messenger 28/11/12](#)). In this case let us say **ERA**, with Commonwealth Government support, could offer incentives for developers and businesses to **make the Eastern Region a creative hub**.

## 2. New Age

**Potential Commonwealth interest is through regional economic development and stimulation of a creative sector that can have an impact at the national level.**

- This project would marshal the business and life experience of the over 50's creative working class. This project links with the Active Ageing initiative.
- There is potential to work from micro home based business or within a state of the art digital innovation centre.
- This project could operate across all of the creative industries such as fashion, graphics industrial design, software development, entertainment –film/ gaming, engineering, architecture, finance and accounting, property services, environmental services, education and training, PR and marketing.
- Such businesses work globally and are found as expert consultants in some of the largest companies locally and nationally.

# The FIG Projects

## 3 . New Generation Sport Precincts

Potential Commonwealth interest is through sport and recreation programs, fitness, preventative health and lifestyle. There is a connection to existing funding arrangements such as bike networks etc.

- The development of new generation sports precincts will require a paradigm shift regarding how existing master planning is currently undertaken
- As indicated in “Putting creative industries to work” (above) a large amount of development in the region will concern sporting precincts. Anchoring the project in a number of planned upgrades to existing ovals, parks and recreation facilities across the region will provide potential advantages in dealing with the integration of this complex issue of sport/recreation and preventative health.
- The next generation sport precinct will:
  - Make the physical and program connection across the region
  - Digitally connect linking individuals sports groups and communities
  - Make capability connections for the ERA community maximising connectivity to services
  - Emphasise the physical and health connections
  - Make the sporting connections and optimising outcomes (sports med opportunities, sports and recreation administration, community tourism, business from major events such as the international Tour Down Under cycling race.

## **Within Sustainable Water three transformative project opportunities are suggested:**

### 1. Extend the current Scheme

Potential Commonwealth interest is through extension of existing Commonwealth commitment to sustainable water management and regional economic development.

- The ERA has been successful in achieving a substantial grant of 9.5M from the Commonwealth Water for Future fund.
- The current scheme does not cover the overall region and a logical next stage for funding would extend the pipe network and ASR sites to remaining council areas.
- Potential regional linkage with community facilities such as swimming pools
- A second stage could extend the network outside the region to the eastern part of Port Adelaide and Enfield Council. This would boost water supply and opportunities for linking with other consumers (municipal and commercial).

# The FIG Projects

## 2. Environmental Sustainability

Potential Commonwealth interest is through on-going environmentally sustainable programs at the national level.

- Link the scheme to the Biodiversity Fund and Carbon reduction projects particularly in relation to the Torrens Catchment and Torrens Linear Park.
- Augment the current scheme by upgrading innovative energy saving measures to offset pumping costs (e.g. gravity feed and solar power).

## 3. Added water supply

Potential Commonwealth interest is through extension of existing Commonwealth commitment to sustainable water management and regional economic development.

- This comprises a “sewer mining” initiative building on existing negotiations with SA Water which involves the City of Tea Tree Gully and its community waste water scheme.
- This endeavour can serve as insurance from rainfall decline and/or its frequency. This is a particular opportunity for additional supply given the urban nature of the ERA Region and sewer capacities.

# Financial Statement 2011 - 2012

## Opening Balance

Opening balance from Financial Year 2010/11	15,331.84
	<u>15,331.84</u>

## Operating Income

Council Contributions	70,000.00
Council Reimbursement from Comrie Presentation	466.55
	<u>70,466.55</u>

## Operating Expenditure

Catering	-305.85
ERA Secretariat	-9,514.06
ERA Showcase	-2,983.64
LGMA Contributions (Challenge and Awards Night)	-5,287.50
Website Development	-275.00
	<u>-18,366.05</u>

## Project Expenditure

ERA Brochure	-2,280.00
Hudson Howells - BEC Meeting	-1,900.00
Julian Rutt - ESD for Planners Session 2	-700.00
National Disaster Resilience Program	-800.00
RFID Feasibility Study	-2,272.73
Youth Audit	-6,000.00
	<u>-13,952.73</u>

## Other Expenditure

Other Misc Expenditure	-965.00
	<u>-965.00</u>

## ERA Financial Result for 2011/12

52,514.61



**era**  
EASTERN REGION ALLIANCE

